



2025
SCHOOL PROSPECTUS

NOMASWAZI

HIGH SCHOOL





NOMASWAZI HIGH SCHOOL

Nomaswazi High School is a reputable private high school fully registered with the Department of Education in KwaZulu Natal. The school is based in Pietermaritzburg but offers quality education at competitive rates not only to the KwaZulu Natal community but also to learners from surrounding Provinces. The school is over 30 years old this year.

We offer the following Programmes:

- Grade 8 – 12 CAPS SYLLABUS
- Grade 12 Repeater's CAPS
- Fully registered with Department of Education
- Umalusi Accredited for Grades 8 - 12 NSC at 100 Church Street, PMB

MISSION

Nomaswazi High School strives to be South Africa's leading independent secondary school for both boys and girls, providing a top-class education by cultivating a culture that embraces holistic educational practices and the best lessons of South Africa's unique non-racial democracy. This is achieved by excellent governance, leadership and management; highly qualified and experienced staff; effective pupil ratios; proactive communication and collaboration with parents and other stakeholders; exceptional sporting and cultural facilities.

VALUES

- Academic excellence
- The realisation of potential
- A positive work ethic and the life skills with which to meet the challenges of a rapidly changing society
- The qualities of self-discipline and self-reliance complemented by an awareness of interdependence

VISION

Nomaswazi High School's Directors and Staff envision a school boasting a full complement of facilities and quality educational product that is provided to the community that it serves. We envision a school possessing a legacy created over the years by the quality of results, achievement of the school and calibre of school leavers. All of the above provided at school fees rates that are affordable, we also therefore envision a community and society greatly advantaged by the existence of Nomaswazi High School.



BACKGROUND

Nomaswazi High School was founded in 1991 by Mrs. V.P.N. Mkhize. This point in time was a pivotal one in South Africa as Black learners were for the first time being allowed to enrol and attend at previously white-only public schools. The Founder noticed that the black students were having difficulty in both integrating and also keeping up with the language and standard of work at their new now multiracial schools.

This was mainly due to the disparity in development between previously Black schools compared to the previously White schools. At that moment a Saturday school was opened that offered extra lessons aimed at developing Language (English) and also at the same time providing extra tuition/support for all other subjects such that these students could be better capable to adapt and ultimately thrive in their now new schools.

With the employ of excellent educators, learning programmes and sound management of the school swelled in numbers and went on to service the greater Pietermaritzburg, Durban and Midlands area. As time went on more subjects and grades were added, the school moved to bigger and bigger premises possessing better and better facilities, employed more and better qualified staff until ultimately Nomaswazi High School was registered as a fully-fledged High School by the Department of Education KwaZulu Natal. Since initial Registration those decades ago Nomaswazi High School has never had its Registration revoked or dropped Matric Pass-rates.



NOMASWAZI HIGH SCHOOL NOW HAS:

- 500 Full-time learners from Grade 8 to 12
- 300 learners enrolled in the Matric Repeaters programme. This programme assist learners from all other schools who either failed Matric or want to improve the marks they achieved on their first Matric attempt.
- Nomaswazi High School is THE original 2nd chance matric institution in Pietermaritzburg.
- A full staff complement of over 35 staff member, which includes qualified and meticulously sourced educators, support staff and administration staff.
- An Academic Curriculum boasting the full range of subjects. The academic programme is the main area of focus and over the years has been fine tuned to what Nomaswazi High school now offers. It is the key to the quality results and pass rates produced yearly.
- Extra-Curricular, sporting and cultural programmes that balance out the educational experience and make the educational product on offer holistic and well rounded.
- Facilities rivalling any of those possessed by other Independent Schools within our area.
- School ethos and culture that the Learners, Parents, Management, Staff and Community are proud of and uphold year in year out.
- A secure and harmonious learning environment conducive to learning.

NOMASWAZI FORMULA

We apply the principle that all stakeholders have an important role to play in the education & development of a learner: The stakeholders being parent, learner & school are directly involved.

What this means for you is that we engage & involve both parent & learners. We develop an open relationship between school, parent & learner whereby parents are always informed & aware of the learners progress & performance.

DEVELOPMENT FOR BEYOND HIGH SCHOOL

At Nomaswazi all the efforts (Academic; Extra-curricular, Discipline etc) are geared towards best preparing learners for the world outside and beyond high school. Our aim is to produce young adults with the aptitude & attitude to go on and be positively contributing members of society. As the slogan says - We prepare learners to "succeed in all areas of life."



AT NOMASWAZI

You receive a secure non-disruptive school environment away from disturbing influences.

- Quality education & affordable fees
- High Pass Rate
- Qualified, experiences & dedicated teachers
- Free start-up stationery & photocopies
- Some textbooks are supplied
- Parental involvement

DISCIPLINE

Nomaswazi is well known for this. We believe that discipline is a very important part of the learning experience therefore it is a big part of the Nomaswazi experience. A firm but fair stance is taken. This applies to everyone from learner to staff members. The result is a stable & harmonious environment conducive to effective learning.

ACADEMIC CURRICULUM

The primary focus at Nomaswazi High School is providing a quality academic product. Over the years we have focused much of the resources & energy of the school towards developing an outstanding Track Record of academic achievements. From qualified & dedicated educators & staff, to good quality of learning material, we have employed these resources to achieve high pass rate and quality results year after year.



SUBJECTS OFFERED

Grade 8 & 9

- English Home Language
- IsiZulu 1st Additional Language
 - Mathematics
 - Life Orientation
 - Social Sciences (SS)
- Economic Management Sciences (EMS)
 - Natural Sciences (NS)
 - Creative Arts (CA)
 - Technology

Grade 10 & 11

- English - Home Language and 1st Additional language
- IsiZulu - Home Language and 1st Additional language
 - IsiXhosa - Home Language
 - Maths Pure
 - Maths Lit
 - Physical Science
 - Life Science
 - Business Studies
 - Accounting
 - Economics
 - Tourism
 - Geography
 - History
 - Life Orientation
- Agricultural Sciences



GRADE 12

- IsiZulu - Home Language and 1st Additional Language
- English - Home Language and 1st Additional Language
 - IsiXhosa Home Language
 - Maths
 - Maths literacy
 - Life orientation

Science Stream

- Physical Science
 - Life Science
- Agricultural Science

Commerce Stream

- Accounting
- Business studies
 - Economics

General Stream

- History
- Geography
 - Tourism



EXTRA-CURRICULAR ACTIVITIES

Alongside a strong academic programme we also offer more & more extra-curricular activities each year. The aim is to provide a rounded educational experience that leads to more rounded development of the learner.

The activities Include:

Life Skills

- Career Day
- Excursions
- Motivational speaker visits

Social

- Matric Ball
- Founder's Day etc

Cultural

- Choir
- Cultural clubs (dance, drama)
- Music clubs
- School news paper

Sport

Depending on demand we offer:

- Soccer
- Mlabalaba
- Netball
- Basket Ball
- Athletics
- Volleyball

Sports Houses

- Eagles (Blue)
- Cranes (Green)
- King-Fisher (Red)

Learner Drivers' license

- Learner Driver's License lessons provided for students

The extra-curricular activities vary every year depending on demand & level of interest from learners.



FULL TIME TUITION FEES

GRADE	DEPOSIT	MONTHLY x 11	TOTAL
FT: 8 & 9	R2750	R2200	R26950
FT: 10 - 12	R2800	R2200	R27000

GRADE 12 REPEATERS TUITION FEES

GRADE	DEPOSIT	MONTHLY x 11	TOTAL
1 Sub	R2480	R1550	R19530
2 Sub	R2480	R1650	R20630
3 Sub	R2480	R1750	R21730
4 Sub	R2480	R1850	R22830
5 Sub	R2480	R1950	R23930
6 Sub	R2480	R2100	R25580

Please Note:

- Monthly fee instalments payable in advance i.e. beginning of the month.
- Use learner's name + surname + grade as payment reference.
- Forward proof of payment to school after all payments.



UNIFORMS

- Boys: White shirt with badge, grey trousers, navy blazer and tie
- Girls: White shirt with badge, grey skirt, navy blazer and tie
- Badge, tie, scarf, jersey & jackets are obtained at the school

TO REGISTER YOU WILL NEED

- 2 recent ID sized photos
- Copy of ID for students & parents
- Registration Fee (Non-refundable)
 - Last school report (original)
 - Transfer Letter
- Parents proof of residence
 - Pay slip
- Parents to accompany their children



FOUNDER'S DAY

Nomaswazi High School has a very strong academic programme. Our year end results speak for themselves and are above National and Provincial pass rates every year. This is something that the school is very proud of and has developed quite a name for.

Founder's Day was started by the school founder, Mrs. V.P.N. Mkhize, and is held every year. On this day the school awards learners who have achieved academic excellence throughout the year. It is a very festive and proud day for the learners and the school as we all come together to celebrate Nomaswazi High School's excellent academic programme and the results of it.

Some of the highlights of this day are:

- The Academic Awards Prize Giving,
- The Academic Procession by our team of qualified & experienced educators in their academic attire.



TECHNOLOGY INTEGRATION

Nomaswazi High School stays ahead of times through the use and integration of technology in the teaching and learning experience. This enhances the educational experience of the learners. This also ensures that the Nomaswazi High School learners are best prepared for tertiary education,

the works place and the world that awaits them outside of high schooling. Some of these technology offerings are:

- Nomaswazi Online Schooling.
- Smart Boards.
- Memio Technology.

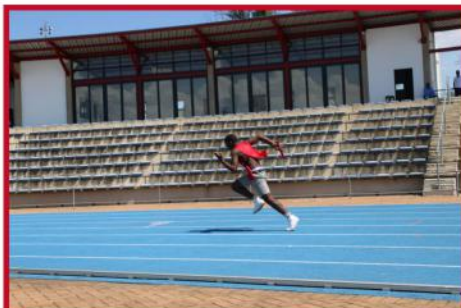


SPORTS AT NOMASWAZI HIGH SCHOOL

Alongside a strong Academic, Arts and Culture programme we also offer an ever growing sports programme. Learners are encouraged to participate in the various sports on offer as we feel this makes for a well-rounded educational experience. We are proud to have some of the past & present learners from Nomaswazi High School represent Provincial and National South African teams.

Besides participating in interschool games, the school has Inter-House Sports Meets every term as follows:

- 1st Term: Athletics
- 2nd Term: Ball Sports
- 3rd Term: Arts & Culture



ANNUAL STUDY & REVISION CAMP

In an effort to assist the learners to get the best possible end-of year results, the school employs various programmes and intervention strategies. These are a very important reason for the excellent results that the school obtains every year. These programmes and strategies are unique to Nomaswazi High School and generally come at no extra cost to the Parent.

One of these Programmes is our annual Maths, Physics and Accounting camp. The learners are sent on a weekend long camp at a safe venue where they receive intensive tuition, revision and covering of the syllabus. This camp has been very successful and effective in increasing the learners' understanding of the subjects and in securing excellent results at the end of the year.



CAREER DAY

The school hosts recognises the need for learners to be continually motivated and also the need for them to be exposed to information about opportunities available outside of school. For this reason Nomaswazi High School hosts an annual Career Day where the school is visited by following individuals/institutions:

- Motivational Speakers – They give motivation and positive re-enforcement to the learners.
- Tertiary Institutions – They give information on further education opportunities/course available and entry requirements
- Successful Professionals – They give career advice, share their formula for success and guide the learners about different career paths from an experienced point of view.

We strive to make our learners best prepared for the world outside and after secondary school.





RED DAY TALENT SHOW

Nomaswazi High School has a very rich cultural, talent and arts culture ethos. The school supports and encourages learners to explore their many diverse talents. This all comes to a climax on our annual talent show called Red-Day. On this day the learners put on a talent show where they showcase their many different talents. These range from Poetry, Dance, Acting, Singing and much more. On the same day the annual Miss and Mister Nomaswazi Pageant is also held. The event is always capped off by a performance from a notable music star.

This event showcases how Nomaswazi High School promotes learners to “excel in all areas of life”.





2025

SCHOOL PROSPECTUS

CONTACT DETAILS

100 Church Street &
88 Pietermaritzburg, 3201
Tel: (033) 342 7093
Fax: (033) 342 7085
www.nomaswazihighschool.org.za
admin@nomaswazihighschool.org.za

BANKING DETAILS

Name: Nomaswazi High School
Bank : FNB, Hayfields Branch
Account No.: 62069772179
Branch Code: 221425

Name: Nomaswazi School
Bank: Standard Bank
Account No.: 251 993 183 (Cheque Acc)
Branch Code: Msunduzi (051001)
Reference: Learner Name & Surname

